

## Table of Contents

|                                          |   |
|------------------------------------------|---|
| Pattern analysis I.....                  | 2 |
| Edit pattern types.....                  | 2 |
| Delete pattern type.....                 | 2 |
| Add pattern occurrence .....             | 2 |
| Remove selected pattern occurrence ..... | 2 |
| Pattern operations .....                 | 2 |
| Disable/show data series.....            | 2 |
| Add pattern occurrence.....              | 3 |
| Remove selected pattern occurrence ..... | 4 |
| Edit pattern types.....                  | 4 |
| Delete pattern type .....                | 4 |
| History .....                            | 5 |

# Pattern analysis I

## Manual patterns

This tutorial shows how to create and define patterns manually.

Open a PSX or a MPX file.

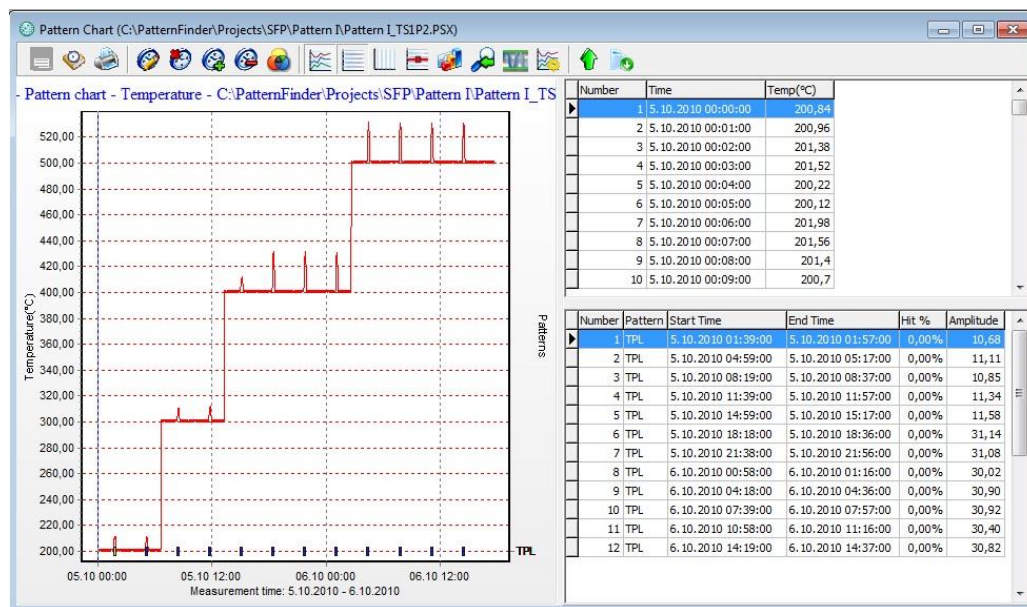


Figure 1 Pattern chart

There are six pattern operation buttons in the pattern chart:



**Edit pattern types**



**Delete pattern type**



**Add pattern occurrence**



**Remove selected pattern occurrence**



**Pattern operations**

(see tutorial 22)



**Disable/show data series**

## Add pattern occurrence

To mark a pattern on the chart you first need to position the cursor on the point where you want to place the pattern and click the **Add pattern occurrence** button on the chart bar.



Figure 2 Add pattern occurrence

A drop-down menu appears. Select the pattern type.

The pattern will be marked on the chart as can be seen in figure 3.

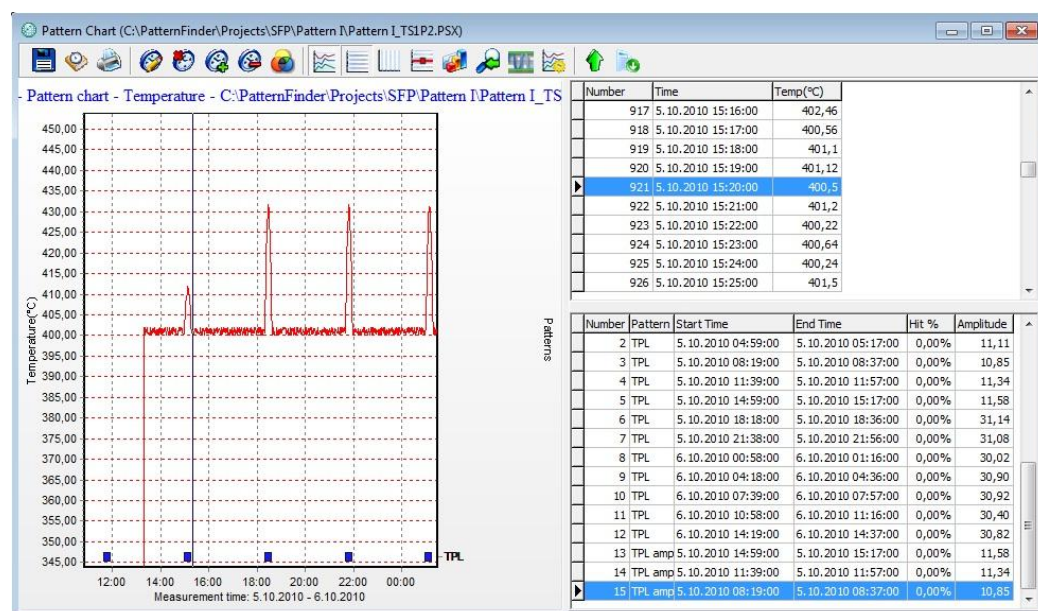


Figure 3 Add pattern occurrence

## Remove selected pattern occurrence

To remove a pattern from the chart, highlight the pattern and click the Remove selected pattern occurrence button.

## Edit pattern types

You can edit the name, description and color of the pattern type by clicking the Edit pattern types button (see figure 4).

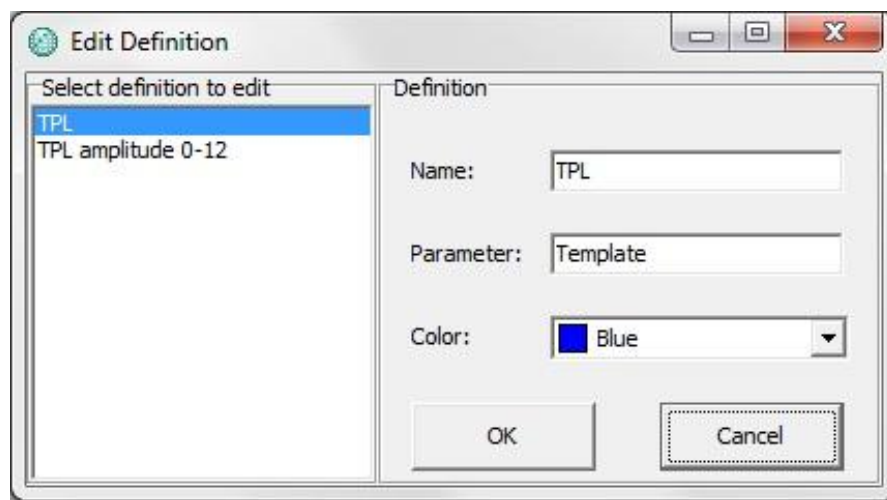


Figure 4 Edit pattern types

## Delete pattern type

You can delete the pattern type by clicking the Delete pattern type button.

A drop-down menu appears. Select the pattern type you want to delete (see figure 5).

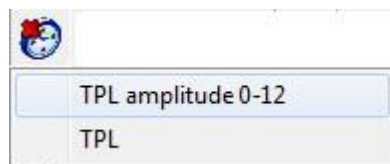



Figure 5 Delete pattern type

## History

Click the **History** button  on the chart bar to add comments and view information on the origin of the signal and the progress of the project (see figure 6). Click **Print** to print out the information (see figure 7).

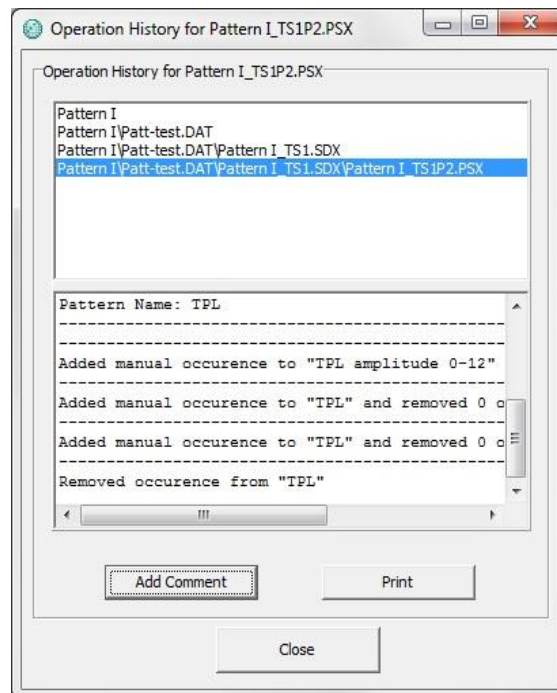


Figure 6 History

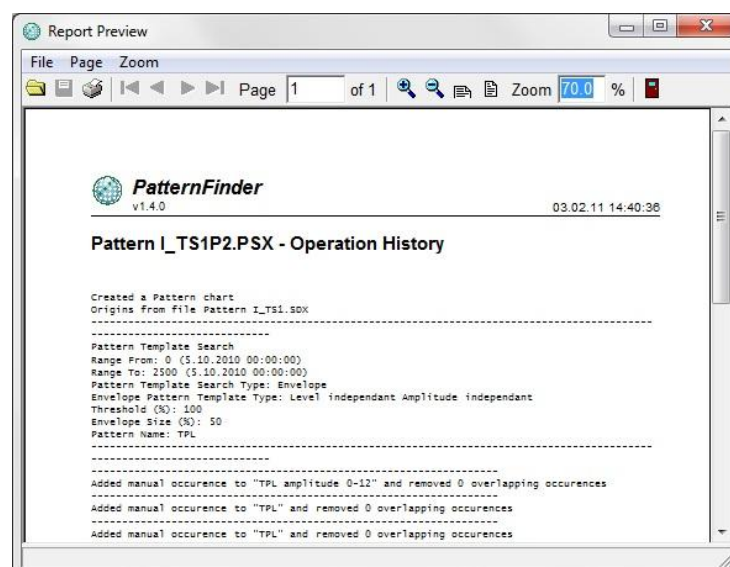


Figure 7 Print Preview